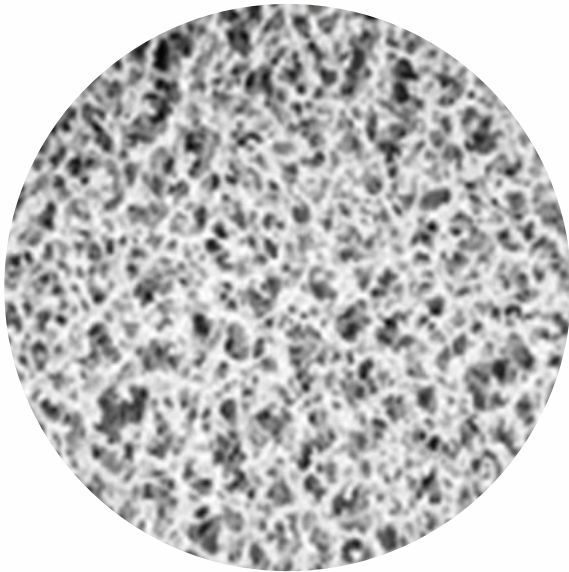


Membrane Filters MCE



Membrane Filters Mixed Cellulose Ester MCE

Dorsan® MCE membrane filters (cellulose esters) are manufactured using the most modern manufacturing techniques to offer a high quality product to our customers.

The combination of cellulose acetate (CA) with cellulose nitrate (CN) results MCE membrane with a smoother surface and uniform pore membranes than pure CN.

Hydrophilic nature and biologically inert, our MCE membranes are the best proposal for general laboratory filtration.

Its high porosity can provide a high flow rate and a very effective retention of microorganisms.

Features

Smooth Surface, hydrophilic
Uniform porosity, high flow rate
White or Black . Plain or Gridded
Packaged on blister, sterile or Z pack
Operating temperature max. 130°

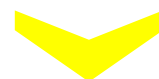
Applications

Microbiology
Biosensors
Particle retention
Prefiltration HPLC
Oenological Laboratories

Packaged
on blister,
sterile ó
Z-PACK



DORSAN®
LIVING FILTRATION



Membrane Filters MCE

Membrane filters Mixed Cellulose Ester characteristics

	Diameter	Mixed Cellulose Ester	Pore	Gridded	Black	Sterile
M0	13	MCE	0.20	G	B	S
	25		0.45			
	47		0.65			
	90		0.8			
	142		1.2			
	293		3.0			

Gridded, Black & Steril: Only in 47 mm (0.20 and 0.45 µm)

MCEWGSZ047045: X Easy Pick 47 mm 0.45 µm, steril, grid, plain.

Membrane filters Mixed Cellulose Ester specifications and packaging

	Diameter	Pore	Box u.
	13 mm	All Pores	100
	25 mm	All Pores	100
	47 mm	0.20	100
		0.45	100
		0.8	100
		0.65	100
		1.2	100
		3.0	100
		5.0	100
		8.0	100
Sterile, Gridded, Plain	47 mm	0.20	100
Sterile, Gridded, Plain	47 mm	0.45	100
Sterile, Gridded, Black	47 mm	0.20 & 0.45	100
Easy Pick Z, Gridded, Sterile, Plain	47 mm	0.45	100
	90 mm	All Pores	25
	142 mm	All Pores	25
	293 mm	All Pores	25

Note. We reserve the right to change these informations without any previous notice.

v01 © Dorsan Filtration